

航管監視最低高度圖  
ATC Surveillance  
Minimum Altitude Chart

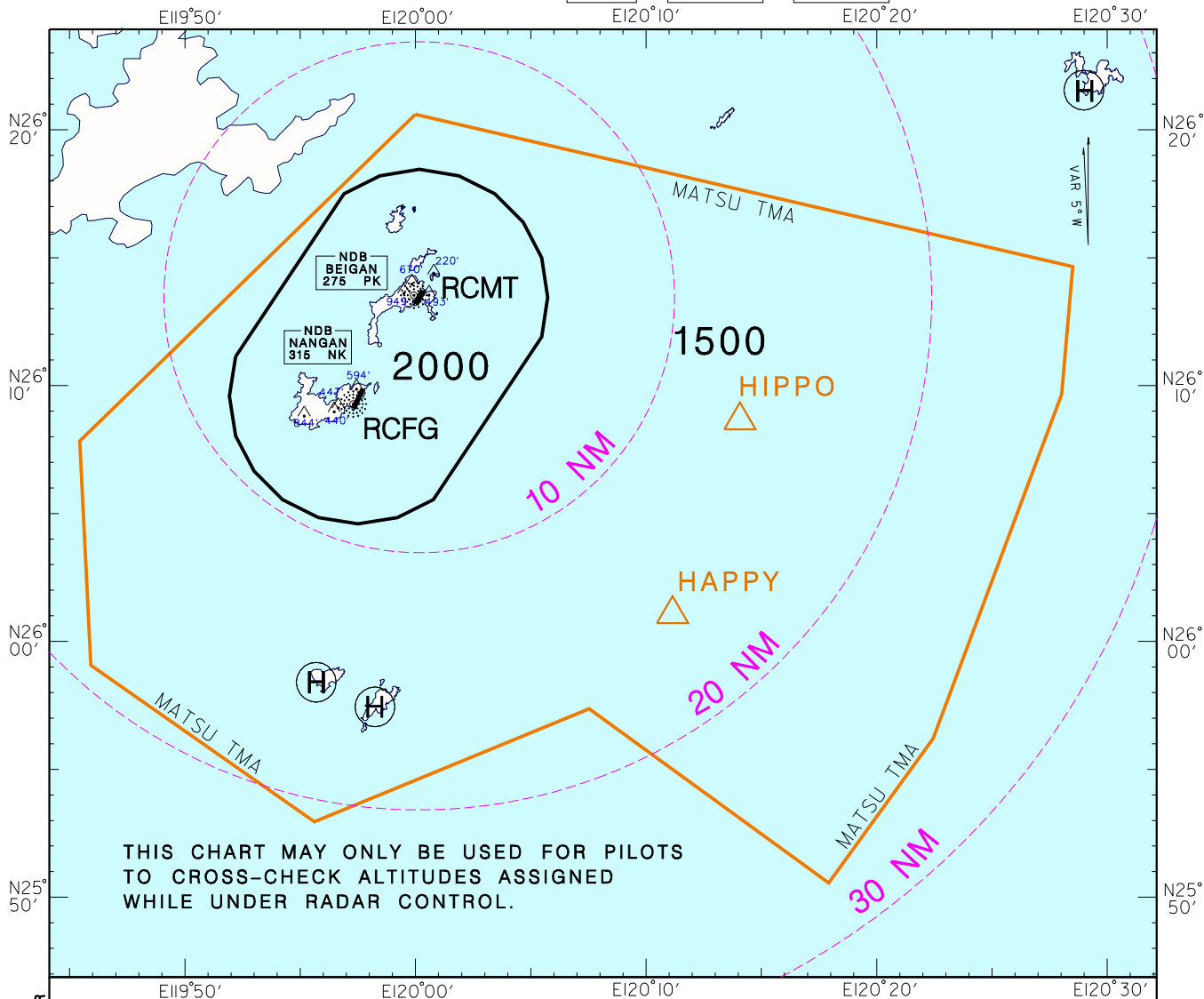
AD ELEV.  
RCMT 41 FT  
RCFG 232 FT

TAIPEI  
APP  
121.0  
122.3

BEIGAN  
TWR  
118.65  
121.5  
ATIS 127.35

NANGAN  
TWR  
118.55  
236.6  
ATIS 127.95

馬祖終端管制區域  
Matsu Terminal  
Control Area



CHANGES: NEW PAGE NUMBER

NOTE

1. Range marks are centered at RCMT ARP(261327N 1200010E).
2. Minimum altitudes are calculated taking into account of minimum clearance above terrain/obstacles. Radar control service cannot be provided to aircraft below the applicable minimum. However, aircraft at designated altitude in relevant sector is not assured of radar contact.
3. Altitudes, Levels, Heights are in feet.
4. Only significant spot heights are shown.
5. LOSS OF COMMUNICATION
  - a. SQUAWK 7600 immediately, and
  - b. follow AIP ENR 1.6.4 "Radio Communication Failure Procedures."

Transition level: FL130  
Transition altitude: 11,000ft